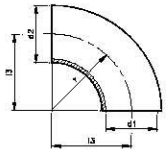


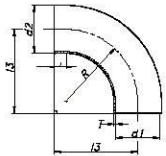


>> ACCESSORIES DIN



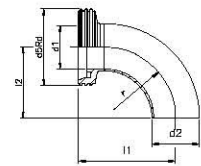
WELDING BEND 90°

FIG.2100



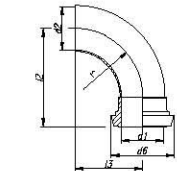
EXPANDING WELD. BEND 90°

FIG.2000



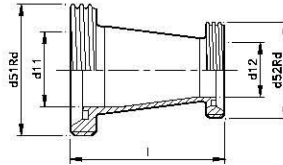
BEND 90° MW

FIG.2110



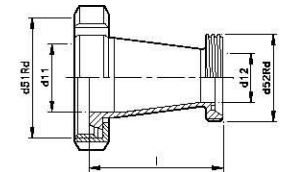
BEND 90° W/L

FIG.2120



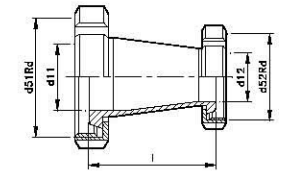
CONCENTRIC REDUCER M/M

FIG.1311



CONCENTRIC REDUCER N/M

FIG.1331



CONCENTRIC REDUCER N/M

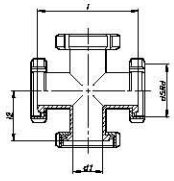
FIG.1333



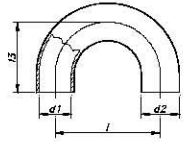
AL SAAD CO

ENGINEERING CONSULTING

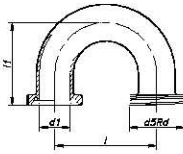
>> ACCESSORIES DIN



CROSS N/N/N
FIG.33333



WELD.BEND 180°
FIG.2800





>> ACCESSORIES DIN

WELDING BEND 90°

DN	d1	d2	I3	r	AISI 304	AISI 316L
10	9	12	26	26	2100010	22100010
15	15	18	35	35	2100015	22100015
20	19	22	40	40	2100020	22100020
25	25	28	50	50	2100025	22100025
32	31	34	55	55	2100032	22100032
40	37	40	60	60	2100040	22100040
50	49	52	70	70	2100050	22100050
65	66	70	80	80	2100065	22100065
80	81	85	90	90	2100080	22100080
100	100	104	100	100	2100100	22100100
125	125	129	187,5	187,5	2100125	22100125
150	150	154	225	225	2100150	22100150

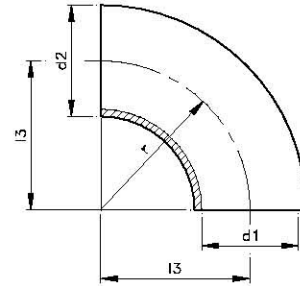
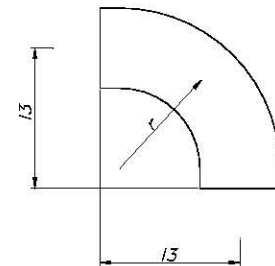


Fig.2100

EXPANDING WELD.BEND 90°

DN	d1	d2	I	I3	r	T	AISI 304	AISI 316L
----	----	----	---	----	---	---	----------	-----------





>> ACCESSORIES DIN

BEND 90° MW

DN	d1	d2	d5Rd	I1	I2	r	AISI 316L
10	9	12	28x1/8"	43	26	26	22110010
15	15	18	34x1/8"	52	35	35	22110015
20	19	22	44x1/6"	59	40	40	22110020
25	25	28	52x1/6"	72	50	50	22110025
32	31	34	58x1/6"	77	55	55	22110032
40	37	40	65x1/6"	82	60	60	22110040
50	49	52	78x1/6"	93	70	70	22110050
65	66	70	95x1/6"	105	80	80	22110065
80	81	85	110x1/4"	115	90	90	22110080
100	100	104	130x1/4"	130	100	100	22110100

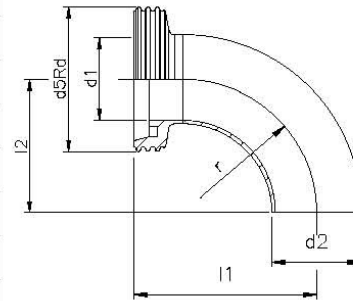


Fig.2110

- To consult availability.

BEND 90° WL

DN	d1	d2	d6	I2	I3	r	AISI 316L
10	10	12	22,5	39	26	26	22120010
15	16	18	28,5	48	35	35	22120015
20	20	22	36,5	53	40	40	22120020
25	26	28	44	65	50	50	22120025
32	32	34	50	70	55	55	22120032
40	38	40	56	75	60	60	22120040
50	50	52	68,5	86	70	70	22120050
65	66	70	86	97	80	80	22120065
80	81	85	100	107	90	90	22120080
100	100	104	121	120	100	100	22120100

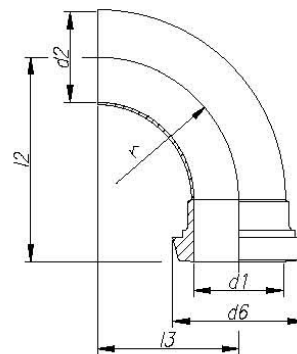


Fig.2120

- To consult availability.



>> ACCESSORIES DIN

BEND 90° M/M

DN	d1	d5Rd	I1	r	AISI 316L
10	9	28x1/8"	43	26	22111010
15	15	34x1/8"	52	35	22111015
20	19	44x1/6"	59	40	22111020
25	25	52x1/6"	72	50	22111025
32	31	58x1/6"	77	55	22111032
40	37	65x1/6"	82	60	22111040
50	49	78x1/6"	93	70	22111050
65	66	95x1/6"	105	80	22111065
80	81	110x1/4"	115	90	22111080
100	100	130x1/4"	130	100	22111100

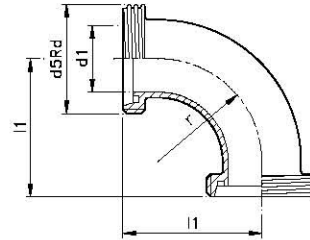
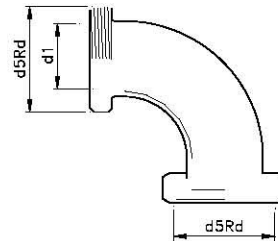


Fig.2111

- To consult availability.

BEND 90° M/M

DN	d1	d5Rd	I1	I2	r	AISI 316L
----	----	------	----	----	---	-----------





>> ACCESSORIES DIN

BEND 90° N/N

DN	d1	d5Rd	I2	r	AISI 316L
10	10	28x1/8"	43	26	22133010
15	16	34x1/8"	52	35	22133015
20	20	44x1/6"	58	40	22133020
25	25	52x1/6"	72	50	22133025
32	31	58x1/6"	80	55	22133032
40	37	65x1/6"	86	60	22133040
50	49	78x1/6"	98	70	22133050
65	66	95x1/6"	112	80	22133065
80	81	110x1/4"	127	90	22133080
100	100	130x1/4"	144	100	22133100

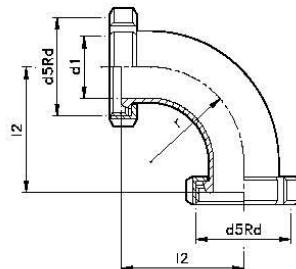


Fig.2133

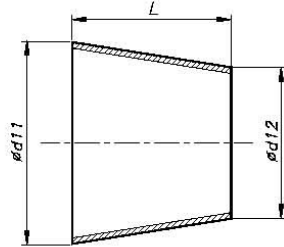
- To consult availability.



>> ACCESSORIES DIN

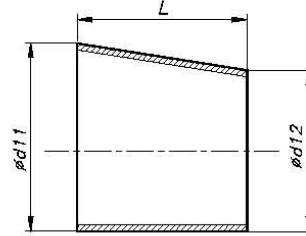
WELDING CONCENTRIC REDUCER

FIG.1300



WELDING EXCENTRIC REDUCER

FIG.1340



DN	Ød11	Ød12	L	AISI 316L
15-10	18	12	10	21300006
20-15	22	18	7	21300007
25-15	28	18	18	21300008
25-20	28	22	11	21300009
32-20	34	22	22	21300012
32-25	34	28	11	21300011
40-20	40	22	33	21300014
40-25	40	28	22	21300016
40-32	40	34	11	21300021
50-25	52	28	44	21300024
50-32	52	34	33	21300026
50-40	52	40	22	21300033
65-32	70	34	62	21300039
65-40	70	40	51	21300041
65-50	70	52	29	21300051
80-40	85	40	78	21300064
80-50	85	52	56	21300066
80-65	85	70	27	21300081
100-50	104	52	90	21300099
100-65	104	70	61	21300101
100-80	104	85	34	21300126

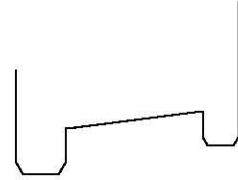
DN	Ød11	Ød12	L	AISI 316L
20-15	22	18	7	21340007
25-15	28	18	18	21340008
25-20	28	22	11	21340009
32-20	34	22	22	21340012
32-25	34	28	11	21340011
40-25	40	28	22	21340016
40-32	40	34	11	21340021
50-25	52	28	44	21340024
50-32	52	34	33	21340026
50-40	52	40	22	21340033
65-40	69	40	51	21340041
65-50	69	52	29	21340051
80-40	84	40	78	21340064
80-50	84	52	56	21340066
80-65	84	69	27	21340081
100-65	104	69	61	21340101
100-80	104	84	34	21340126



>> ACCESSORIES DIN

CONCENTRIC REDUCER NN

DN	d11	d12	d51Rd	d52Rd	L	AISI 316L
----	-----	-----	-------	-------	---	-----------





>> ACCESSORIES DIN

WELDING TEE

DN	d1	d2	I3	I	AISI 304	AISI 316L
10	9	12	26	52	3000010	23000010
15	15	18	35	70	3000015	23000015
20	19	22	40	80	3000020	23000020
25	25	28	50	100	3000025	23000025
32	31	34	55	110	3000032	23000032
40	37	40	60	120	3000040	23000040
50	49	52	70	140	3000050	23000050
65	66	70	80	160	3000065	23000065
80	81	85	90	180	3000080	23000080
100	100	104	100	200	3000100	23000100
125	125	129	187,5	375	3000125	23000125
150	150	154	225	450	3000150	23000150

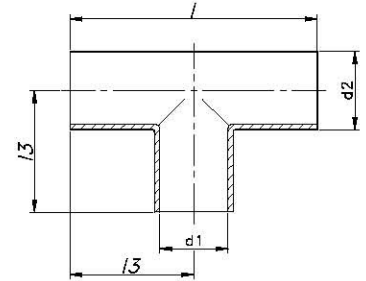


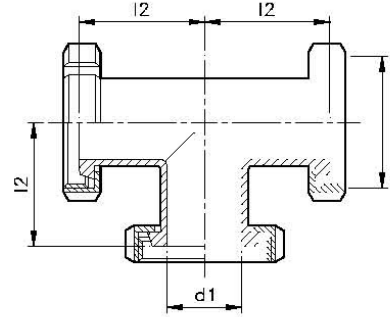
Fig.3000



>> ACCESSORIES DIN

TEE N/N/N

DN	d1	d5Rd	l2	AISI 304	AISI 316L
----	----	------	----	----------	-----------





>> ACCESSORIES DIN

WELDING BEND 180°

DN	d1	d2	I3	I	AISI 316L
10	10	13	26	52	22800010
15	16	19	34	68	22800015
20	20	23	38	76	22800020
25	26	29	50	100	22800025
32	32	35	55	110	22800032
40	38	41	60	120	22800040
50	50	53	70	140	22800050
65	66	70	80	160	22800065
80	81	85	90	180	22800080
100	100	104	100	200	22800100

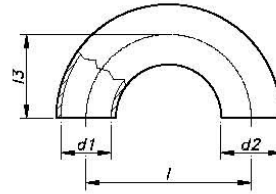


Fig.2800

- To consult availability.

BEND 180° MM

DN	d1	d5Rd	I1	I	AISI 316L
10	10	28x1/8"	43	52	22811010
15	16	34x1/8"	51	68	22811015
20	20	44x1/6"	57	76	22811020
25	26	52x1/6"	72	100	22811025
32	32	58x1/6"	77	110	22811032
40	38	65x1/6"	82	120	22811040
50	50	78x1/6"	93	140	22811050
65	66	95x1/6"	105	160	22811065
80	81	110x1/4"	115	180	22811080
100	100	130x1/4"	130	200	22811100

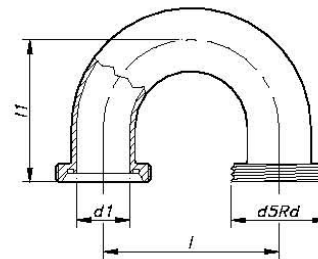


Fig.2811

- To consult availability.



>> ACCESSORIES DIN

BEND 180° N/N

DN	d1	d5Rd	l2	l	AISI 316L
----	----	------	----	---	-----------

